

U19 PIGMENT GOGO

OPERATOR'S MANUAL



The Latest Medical Concept Beauty Equipment:
combines

Electroporation & 2-Way Helix DNA-Chain-liked Spinal Wave

Theory:

With the use of Electroporation Technology, it creates intercellular gaps and interstitial channels in between cells, modifies the molecular structure of the cell membrane and at the same time, forces the cells to open up to 750-900 micro-pores immediately, for the ease of absorbing active ingredients of any product.

Meanwhile, the 2-Way Helix DNA Chain-Liked Spinal Wave Technology uses its downward spinal wave to shatter the pigments underneath the skin tissues, then the upward spinal wave uses the gap in between the subcutaneous layer of the skin to bring the pigments extracted to the handprobe. From the handprobe, you can see a thin layer of pigment that has been just extracted from beneath the stratum basale areas.

U19 Pigment Gogo is safe, painless and it has no recovery downtime! It is one of the most dynamic skin treatments available today for people who suffer from hyperpigmentation, age spot, acne scarring, sagging skin, superficial scars, fine lines and wrinkles.

U19 Pigment Gogo is not only beneficial to the above skin problems, it is especially effective on uneven skin tones and open pores. It can reduce pore

size, increase skin moisture and elasticity, increase collagen production and improve blood & lymph circulation.

The ***U19 Pigment Gogo*** is remarkably safe and effective on any skin types, be it oily or dry or sensitive or combination or ageing skins. It is non-ablative and non-invasive.

U19 Pigment Gogo treatment is also the perfect option for people who want a skin treatment that delivers immediate results.

Visible and noticeable improvement can be seen even after the first treatment. Skin turns radiant and soft.

PREFACE

JF BEAUTY GROUP would like to thank you for your choice of the **U19 Pigment Gogo**, the latest breakthrough innovation that combines precision non-invasive Electroporation with the 2-Way Helix DNA Chain-Liked Spinal Wave Technology to extract pigmentation from the Stratum Basale Layer.

This device is remarkably in high demand because not only the pigments can be extracted out within minutes, it can also be seen by naked eyes! Therefore, **U19 Pigment Gogo** is specifically designed for aesthetic applications and represents the best choice for the medical professional.

JF BEAUTY GROUP strongly advises the operator to read this manual thoroughly. The following chapters provide a description of the system, the technical specifications, and installation, operating, and maintenance instructions.

NOTE

U19 Pigment Gogo warranty is void if:

- Anyone other than authorized personnel install and/or service the equipment
- Electrical facilities at the installation site do not comply with all application codes, including IEC and UL requirements
- The device is not used in accordance with the instructions specified in this manual.

PATENTS

U19 Pigment Gogo is protected by **JF BEAUTY GROUP**

Operator Responsibility

Personnel operating the unit must have a thorough understanding of the proper operation of **U19 Pigment Gogo**. Operators must be trained at the initial sale by authorized personnel. Additional training sessions may be arranged. **JF BEAUTY GROUP** is not responsible for injury or damage resulting from improper use of **U19 Pigment Gogo**. If there is any doubt concerning the use of **U19 Pigment Gogo**, please contact us immediately on **+603- 62016080** or
E-mail : info@jfbeauty.com

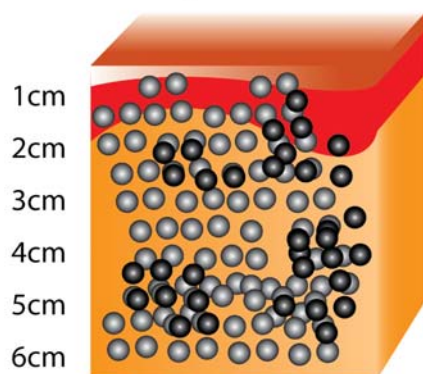
CHAPTER 1: GENERAL OVERVIEW

1.1 TREATMENT OBJECTIVES

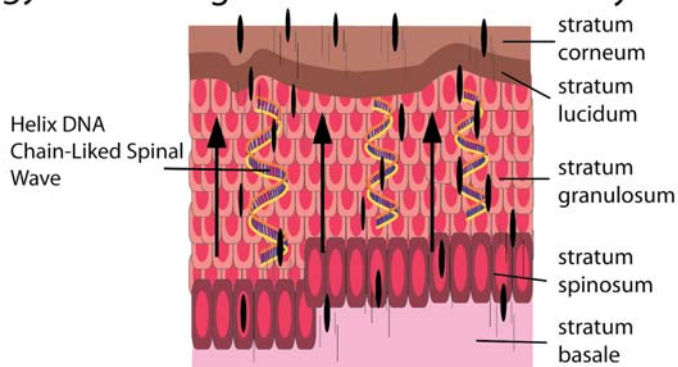
The ***U19 Pigment Gogo*** has been designed to perform a progressive and deep penetration of active ingredients up to 6cm into the skin while it opens up 750-900 micro-pores. And simultaneously with the 2-way Helix DNA Chain-linked Spinal Wave Technology to shatter the pigments underneath the skin tissues and through the pigments extraction pathway, bring them away from the skin surface!

The ***U19 Pigment Gogo*** treatment objective is to improve outcomes of dermatological conditions.

U19 Electroporation Technology



Pigment Extraction Pathway

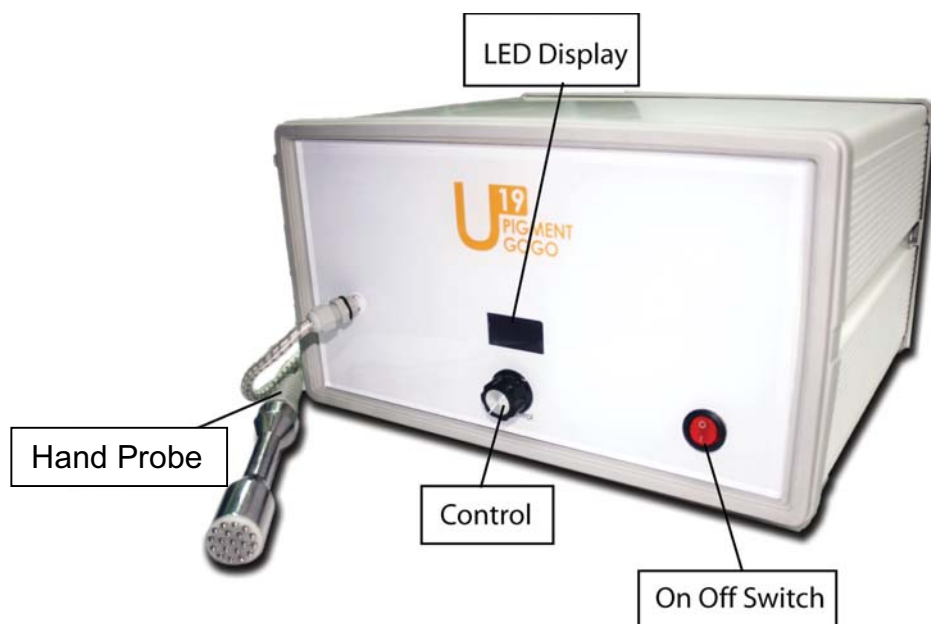


The main indications of use are:

- Deep penetration of active ingredients
- Pigments underneath skin layers to be extracted
- Skin is glowing with pinkish radiant smooth

1.2 SYSTEM FEATURES

The following section identifies the features of the **U19 Pigment Gogo** system



Measurement: 340mm(W) x 292mm (D) x 180mm (H)
Nett weight: 7kg

Hand Probe	A pathway for deep penetration of active ingredients and extracting pigments from beneath the Stratum Basale
On/ Off Switch	Turn the system on / off
Control	Control the intensity of the power
LED Display	Display the intensity in numerical numbers

BACK



Fan	To cool down the machine inner parts
Power Supply	Connect machine to electricity supply
Info/details	Serials numbers of each individual U19

CHAPTER 2: INSTALLATION

2.1 INSTALLATION REQUIREMENTS

1. The electrical receptacle is an approved type and complies with UL standards.
2. The power input is the same indicated on the data plate of the unit that is 220+/- 10%, AC, 50+/- 1Hz single phase.
3. The **U19 Pigment Gogo** voltage conforms to the electrical voltage of your outlet.
4. The device is located on a suitable flat surface (Table, Trolley) with the front console towards the operator.

CHAPTER 3: GUIELINES & OPERATION

3.1 PREPARATION

Before beginning a treatment, the operator must:

1. Install power supply.
2. Evaluate the patient's skin type and condition.

3.2 PROCEDURE

With the Handprobe unrestricted, turn on the power switch located on the front center of the machine.

Treatment Protocol is as follows:

- Cleanse the patient's skin to remove any makeup and environmental pollutants.
 - Spread a thick layer of Ultrasound Gel onto the treated areas and the Treatment Handprobe as well.
 - Turn on the On / Off Switch.
5. Turn the knob that is indicating the strength of the system to 5 (on face) initially, from there either increase or decrease the strength according to client's comfort. When there is a tingling sensation, it means the pigment underneath the skin tissues is being extracted. We do not advice to increase more than 12 on the face. When the strength is well-adjusted, the handprobe must move in a very slow manner. Do not station on one spot for long.

P/S: U19 Pigment Gogo can be used not only on the pigment areas but also the whole face, neck and body.

6. After moving the handprobe for 3~5 minutes, take a look at the handprobe's electric plates. If it is filled with brownish colour on the electric plates, the treatment is considered complete.

P/S: If need to start on another area, repeat the same process.

- Continue with the treatment package (masking, ampoule) that you provide as usual.
- Advise the patient of a proper at-home, post-care regimen.
- Avoid outdoor activity for 24hours.

Keep a record of the procedure on a Patient Log Form.

****The result will be enhanced tremendously if the treatment combines with 609i Oxy Hydro Peel or Oxy Bar & Spa or Derma ET660.***

Additional Guidelines & Operations:

- * After every use, always clean the handprobe with a soft cloth / brush with germ-killing antiseptic solution like Dettol.
- * Turn the ***U19 Pigment Gogo*** off when not in use in order to keep the handprobe in a good and lasting condition.
- * Treatment times are a guideline only, the device can be used more frequently. It is advisable to use once a week or not lesser than 72 hours.
- * Repairs may only be carried out by an authorized repair center.
- * The ***U19 Pigment Gogo*** is warranty against defects for a period of one year.

3.3 FREQUENTLY ASK QUESTIONS

1) By using ***U19 Pigment Gogo***, how deep can the active ingredient of product be delivered to?

Answer: 1mm to 10cm

2) With ***U19 Pigment Gogo***, how many % can be delivered into different skin layer?

Answer: 99% can be delivered deep into 1cm of the skin layer; while 65% can reach 6cm deep into the skin.

3) How long do you need to see the effect of pigment being extraction onto the handprobe with ***U19 Pigment Gogo***?

Answer: about 5 to 10 minutes

4) What skin types and what age range are suitable to use the ***U19 Pigment Gogo***?

Answer: *U19 Pigment Gogo* especially beneficial for uneven skin tone, hyperpigmentation, age spots, dull, lifeless skin, as well as dry & wrinkled skin. Basically, it is suitable for all skin types. It can also be used on the face, neck, back, decollete or whole body; you may use it as long as you want to bring active ingredients to the specific skin areas. It is also very suitable for busy patients who demanded fast results.

5) What effect can be seen after using the ***U19 Pigment Gogo***?

Answer: The most obvious effect can be seen by naked eyes is the extracted pigment on the handprobe. You may also see that there is an obvious increase in the skin moisture and elasticity, and the skin immediately turns crystal clear, supple & smooth; coarse & open pores

substantially turn smaller; fine lines and wrinkles become subdued; skin tones become fairer and finer.

6) What is the feeling when applying *U19 Pigment Gogo*? Is it safe?

Answer: No pain, no side effects and zero recovery time. *U19 Pigment Gogo* is remarkably safe and effective; non-ablative & non-invasive, the complete procedure is fast and convenient (not more than 10 minutes); also, no special care needed after the procedure. Other skin rejuvenation technology is compatible with *U19 Pigment Gogo*.

CHAPTER 4: MAINTENANCE

4.1 DAILY MAINTENANCE

Proper cleaning of *U19 Pigment Gogo* is imperative to your patients' health and prolongs the life of your unit. Cleaning must be performed immediately after every *U19 Pigment Gogo* treatment with brush and antiseptic solution.

Failure to follow these procedures will VOID your warranty.

CAUTION: KEEP OUT REACH OF CHILDREN

CHAPTER 5: CONTACT INFORMATION

For any enquiry, please contact:

JF BEAUTY GROUP SDN BHD

Level 11-7, Menara 1 Monk Kiara, NO1 Jalan Kiara,
50480 Mont Kiara, Kuala Lumpur,
Malaysia.

TEL : 603- 62016080

FAX : 603- 62016081

www.jfbeauty.com

info@jfbeauty.com

CHAPTER 6: DISCLAIMER

This manual is not intended as a comprehensive guide for all aspects of treatment. **JF BEAUTY GROUP** highly recommends the operator confer with the Department of Labor, Licensing, and Regulation or other such regulatory body his/her respective state or country regarding legal use of this system. Operators must be trained at the initial sale by authorized personnel. **JF BEAUTY GROUP** declines any responsibility for the direct consequences or side effects experienced by individuals undergoing treatment.

U19 Pigment Gogo warranty is void if:

- Anyone other than authorized personnel installs and /or services the equipment.
- Electrical facilities at the installation site do not comply with all application codes, including IEC and UL requirements.
- The device is not used in accordance with the instructions specified in this manual.

Because of our ongoing commitment to product quality and innovation, **JF BEAUTY GROUP** reserve the right, at any time, to discontinue or modify specifications, prices, designs, features, models or equipment without incurring obligation.

This manual should always accompany the unit and its location must be known to all personnel operating the unit. Additional copies of this manual are available from your local distributor or **JF BEAUTY GROUP**.

CHAPTER 7: TERMS OF WARRANTY

Any repairs resulting from nature disasters, accidents, electrical system faults, negligence, improper use of device, improper cleaning device, improper maintenance of the device, installations, servicing, repairs, or alterations to the unit performed by personnel not authorized by **JF BEAUTY GROUP** are not covered by this warranty.

Warranty period is one year from the date of purchase.

This warranty is non-transferable. All sales are final.